

Souhegan WOOD
PRODUCTS

BELT-WINDING CORES



**STRONG
CORE
VALUES**
START HERE.



Since 1955, Souhegan Wood Products has been a global leader in the production and distribution of winding cores. Also known as extruded shells, our rugged cores provide unrivaled strength and internal support for a broad range of rubber and industrial belt as well as woven and non-woven textiles during winding, unwinding, and transport.



A long-time member of the National Industrial Belting Association, SWP understands the belt-winding process better than any other core supplier.

The strong, reliable backbone of industries around the globe



SWP STANDARD CORE

Sturdier than lumber or cardboard and lighter than steel, Souhegan Wood Products compressed wood particle cores have earned best-in-class status as the preferred core for the belt-winding industry. Our purpose-built cores are designed to transition easily through manufacturing, shipping, and installation – benefiting your bottom line and exceeding your expectations.

SWP CORE STRENGTHS

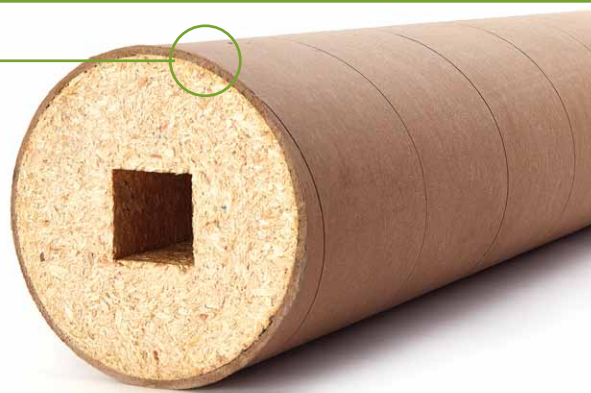
- Resist splitting
- Tremendous crush strength
- High impact resistance
- Lightweight
- Easy to implement
- Cut to desired length
- Materials can be quickly attached and wound at high speeds
- Suitable for sustained use
- Can be custom manufactured (e.g. variable lengths, diameters, hole configurations)
- Can be used as-is or enhanced

ENHANCE YOUR CORE PERFORMANCE.

Over the past 60 years, we've listened carefully to our customers' ideas, needs, and requests to make our products the best they possibly can be. In turn, we've engineered, tested, and introduced a proven series of add-ons designed to enhance the performance of our standard cores. These value-added features can be combined to build a customized core for your specific application.

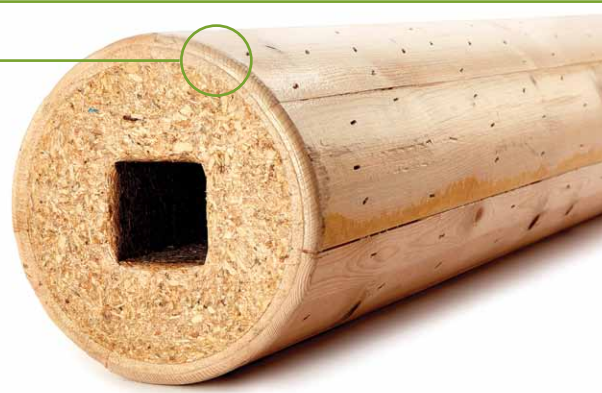
PAPER-WOUND

Versatile, high-strength reinforcement



WOODEN STAVES

Strength that rivals steel



CORE ENHANCEMENTS

METAL END CAPS

Reinforcement for repeated use



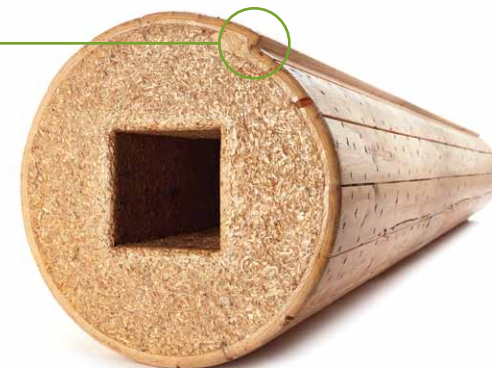
COATED FINISH

A smooth, dust-free seal



NOTCHED

Prevent belting damage & waste



PAPER-WOUND

Versatile, high-strength reinforcement



KEY FEATURES

Solid paper tube sheath around standard core

Variable tube thickness to meet your application's target strength

Adds beam and hoop strength without added weight

Clean, dust-free surface

Gives core a finished, presentable appearance

BEST FOR

- Mid- to heavy-weight belting
- Woven and non-woven textiles
- Dust-sensitive products and facilities
- Repeat core use



WOODEN STAVES

Strength that rivals steel



KEY FEATURES

Laminated custom-cut wood staves

Won't damage winding bars like steel can

Added beam strength and durability

Greater axial compressive strength

Patented design

BEST FOR

- Demanding situations
- Mid- to heavy-weight belting
- In-field use
- Repeat core use



METAL END CAPS

Reinforcement for repeated use



KEY FEATURES

Increased durability

Protects core from abrasive
and compressive damage

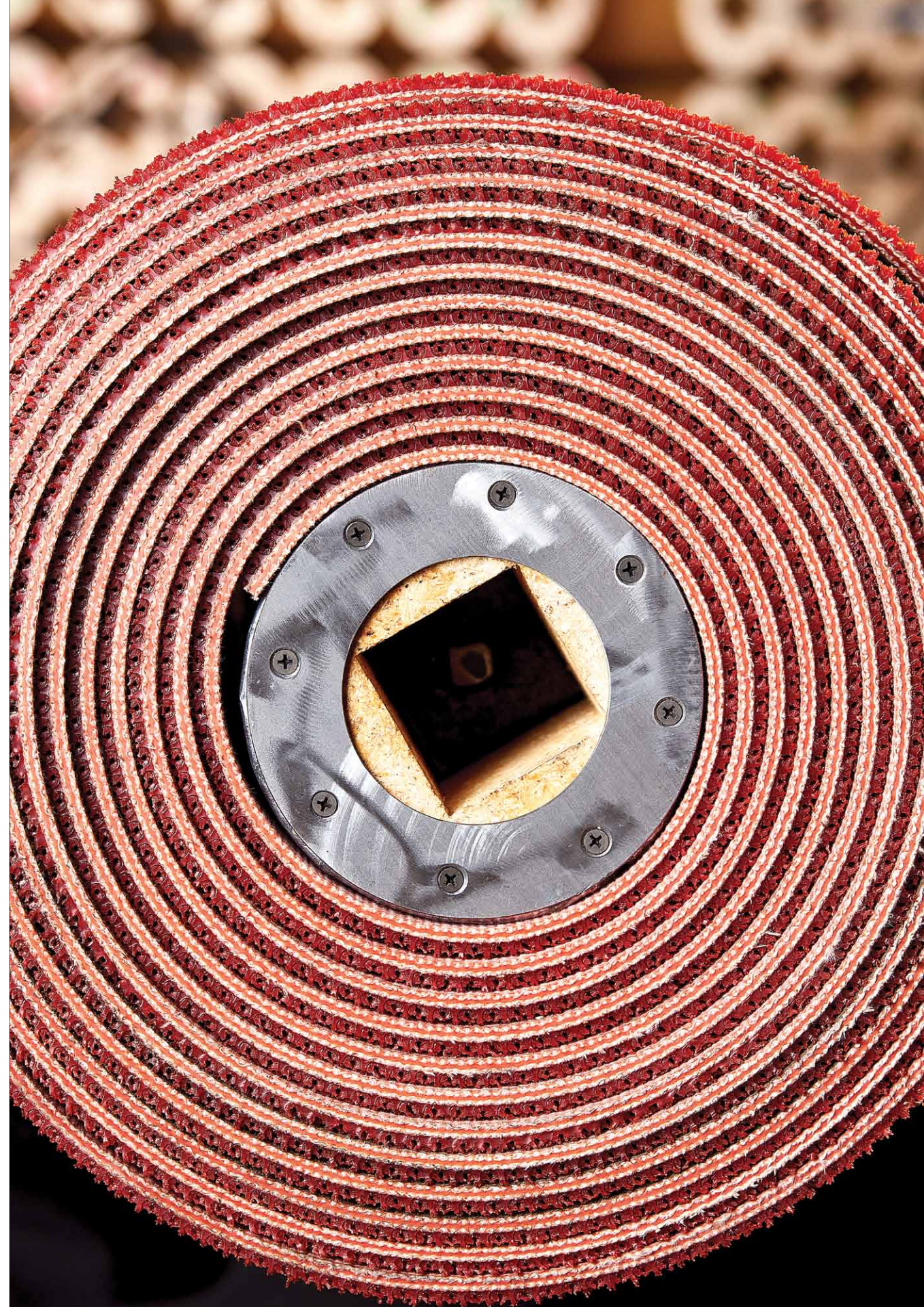
Cap depth customizable
from 1 to 4 inches

Does not impede bar insertion

Can be added to paper-wound
and staved cores

BEST FOR

- Prolonged in-house use
- Cores spun on a journal
or roller cradle
- Product stored on an
end-support rack
- Chain-down trailer transport



COATED FINISH

A smooth, dust-free seal



KEY FEATURES

Creates a clean surface,
free of dust and particles

Provides a more
finished appearance

Can be applied to
paper-wound or staved cores

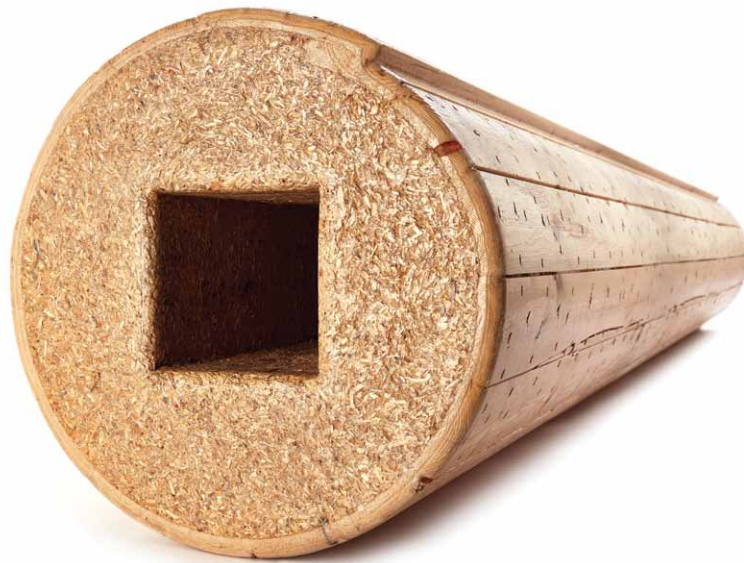
BEST FOR

- Dust-sensitive products and facilities
- Woven and non-woven materials
- End-use customers that showcase product on the core



NOTCHED

Prevent belting damage and waste



KEY FEATURES

Patent-pending design allows belting to wrap flush against core

Reduces profiling-through of any susceptible rubber and textile materials

Reduces product waste

Favored by end-use customers

BEST FOR

- Manufacturers – offer this money-saving option to your customers
- Distributors – cut costs and waste
- Winding heavyweight materials



POPULAR CORE ENHANCEMENT COMBINATIONS

Our enhancements seamlessly work together to create an integrated core design that's custom-tailored to meet your specific needs.

These are just a few of the possibilities – contact us to discuss how we can make our cores work hard for you.

**PAPER-WOUND
+ COATED FINISH**



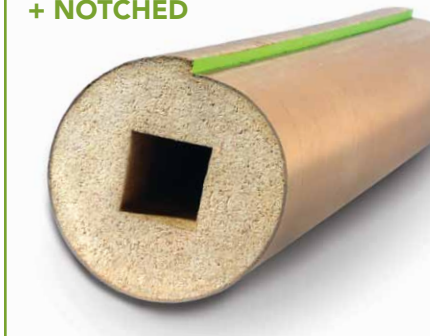
**PAPER-WOUND
+ METAL END CAP**



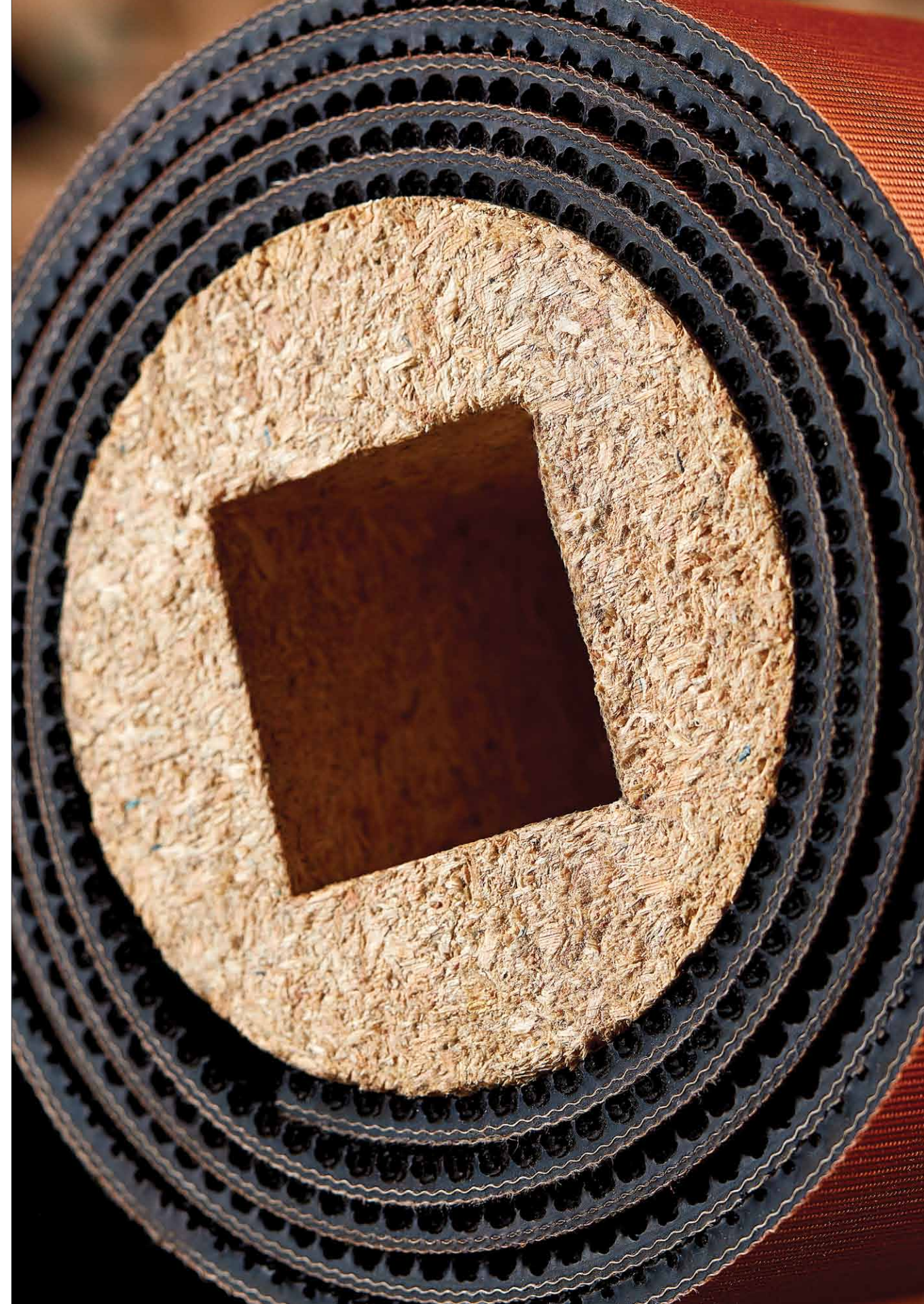
STAVED + METAL END CAP



**PAPER-WOUND
+ NOTCHED**



STAVED + NOTCHED



ABOUT SOUHEGAN WOOD PRODUCTS

Souhegan Wood Products is a family-owned and operated manufacturer based in New England, close to major ports of Boston, New York, and the Canadian Maritimes for fast and economic shipping worldwide.

For four generations, our patented manufacturing process has combined graded, recycled wood particles with high-strength, thermosetting resins to create a range of pressed-wood products. SWP engineers continually test, inspect, and improve everything we produce to meet customers' specific requirements and remain at the forefront of evolving industry trends, making ours the most innovative and rugged goods on the market.

Using only reclaimed sawdust from other wood industries means we're not only reducing impact on limited raw materials, but we're also keeping production costs low and eliminating landfill waste – a commitment to sustainability that helps customers reach their corporate environmental goals.



For more information on our full line of belt-winding cores or to request a quote, please visit us at souheganwood.com or call **(603) 654-2311**.



Souhegan WOOD PRODUCTS

PO Box 120 | Wilton, NH 03086 | USA